

FRENCH WEST AFRICA · FUNCHAL · GABON and REPUBLIC OF GABON · GAMBIA · GEORGIA
 GERMAN EAST AFRICA · GERMAN NEW GUINEA · GERMAN SOUTH WEST AFRICA



© H. E. HARRIS & CO. PRINTED IN U. S. A.

GERMANY



GERMANY (cap. Berlin) appeared on the map in 1871, when various German-speaking states united to form the German Empire. In science, invention, arts, letters, commerce and industry, Germany ever since remained one of the world's leading nations. Postage stamps graphically depict the formation of the Empire; its collapse after World War I; the post-war Republic; the ruinous currency inflation; the rise of Nazi Germany under Hitler — which led to World War II and the partition into two Germanys. GERMAN FEDERAL REPUBLIC OR WEST GERMANY (95,902 sq. mi.; pop. 55,000,000; cap. Bonn) is again powerful and prosperous. GERMAN DEMOCRATIC REPUBLIC OR EAST GERMANY (41,635 sq. mi.; pop. 17,500,000; cap. East Berlin) is a Communist state dominated by Russia.

COAT OF ARMS



© H. E. HARRIS & CO.

PRINTED IN U. S. A.

GERMANY



© H. E. HARRIS & CO. PRINTED IN U. S. A.

GERMANY



© H. E. HARRIS & CO. PRINTED IN U.S.A.

GERMANY

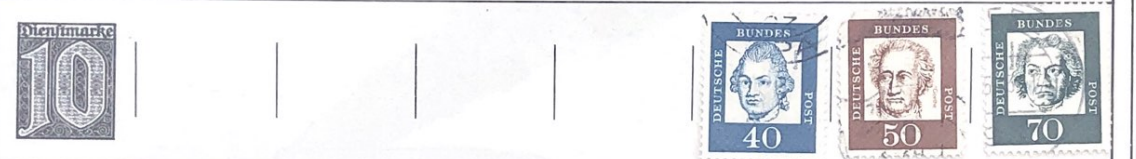


© H. E. HARRIS & CO. PRINTED IN U. S. A.

GERMANY

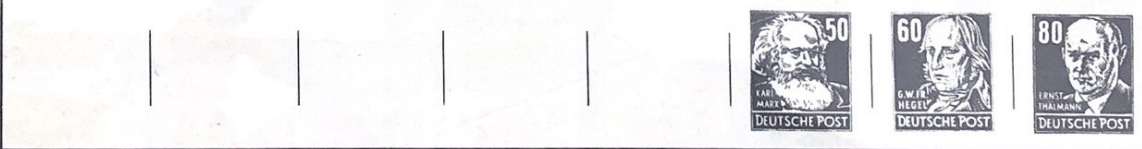
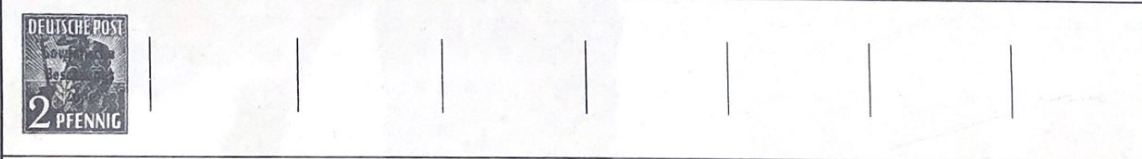
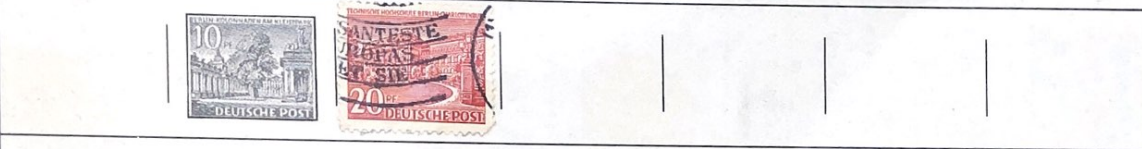
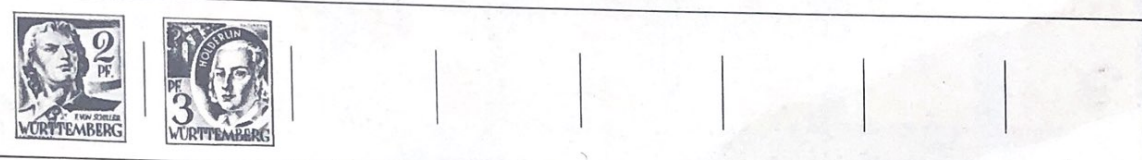
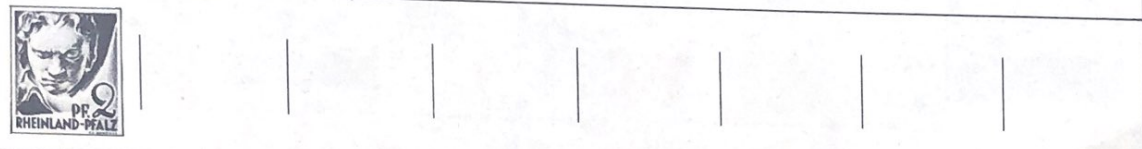
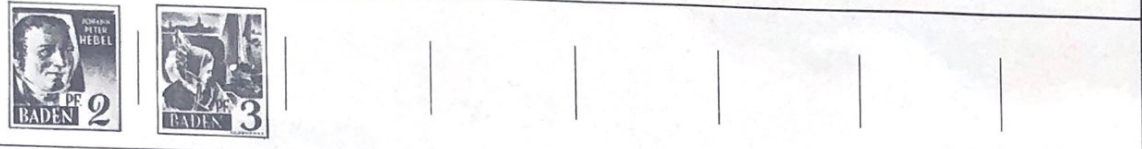


GERMANY



© H. E. HARRIS & CO. PRINTED IN U. S. A.

GERMANY: French Occupation • Baden • Rhine • Wurttemberg • Berlin



© H. E. HARRIS & CO. PRINTED IN U. S. A.

GERMANY: German Democratic Republic



© H. E. HARRIS & CO. PRINTED IN U.S.A.

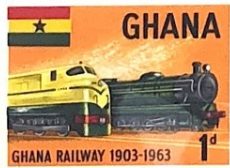
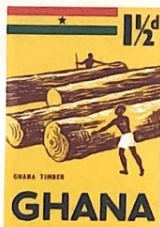
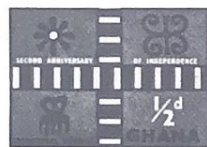
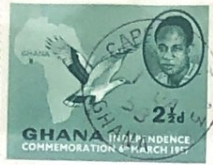
GERMANY: German Democratic Republic



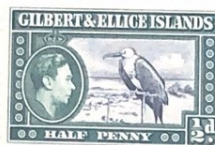
GERMANY: Offices in China, Morocco and Turkey



GHANA



GIBRALTAR · GILBERT and ELLICE IS. · GOLD COAST · GRAND COMORO IS.





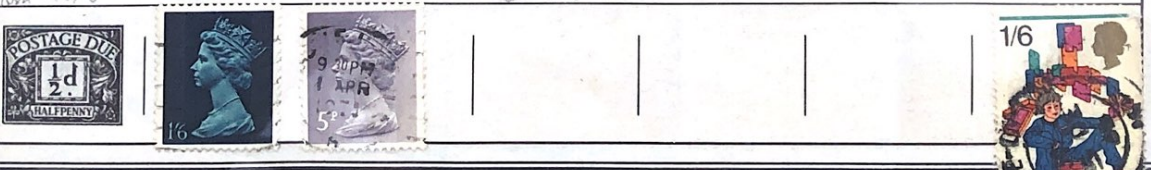
GREAT BRITAIN

THE UNITED KINGDOM OF GREAT BRITAIN (England, Scotland, Wales) AND NORTHERN IRELAND (93,895 sq. mi.; pop. 52,000,000) is the second most powerful of European countries. Its capital London is the world's second city. Its products range from chinaware and woolsens to automobiles, jet planes and ocean liners. The British islanders, who live by importing raw materials and exporting finished products, depend for their survival upon the freedom of the seas. Possessed until recent decades of the world's greatest colonial Empire, they have gradually and peacefully converted it into the remarkable BRITISH COMMONWEALTH OF NATIONS, a voluntary association of independent countries held together by common allegiance to the British crown and mutual benefits in matters of trade and defense.

COAT OF ARMS



GREAT BRITAIN

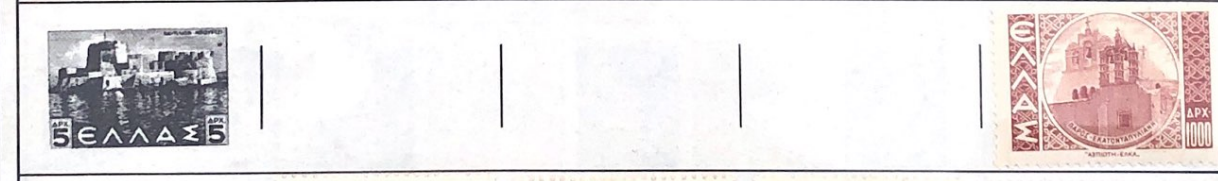
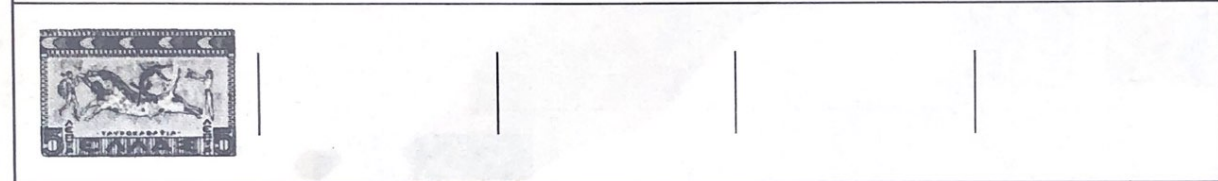
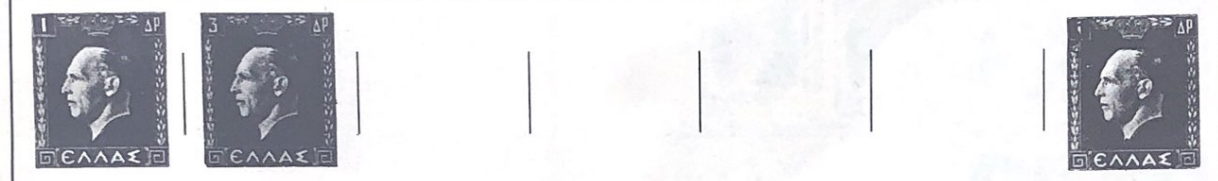


GREECE



The KINGDOM OF GREECE, or HELLAS (51,182 sq. mi.; pop. 8,300,000; cap. Athens) was born in 1827 after the fierce War of Independence against the Turks, who had ruled Greece for 400 years. Many stamps picture the heroes (including Lord Byron), martyrs and events of that bloody conflict. Nearly all of Greece consists of stony uplands and barren mountains, yet the people are almost entirely engaged in agriculture, raising olives, currants, grapes and tobacco on that fifth of the land which is arable. Industrial production has grown rapidly since World War II. Modern Greeks have become a different race, and speak a different language, from ancient Greeks; but, proud of their glorious past, feature on postage stamps many myths, monuments, statues, and historic events of their ancient civilization.

COAT OF ARMS



GREECE



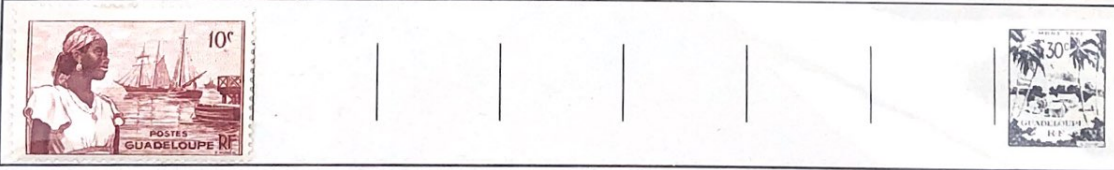
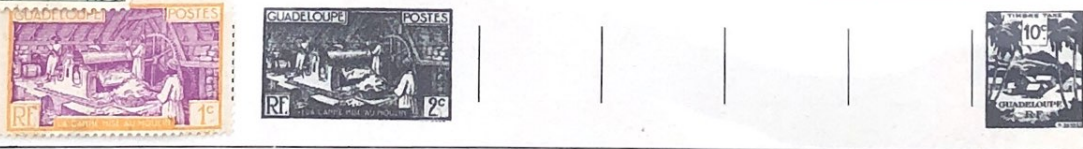
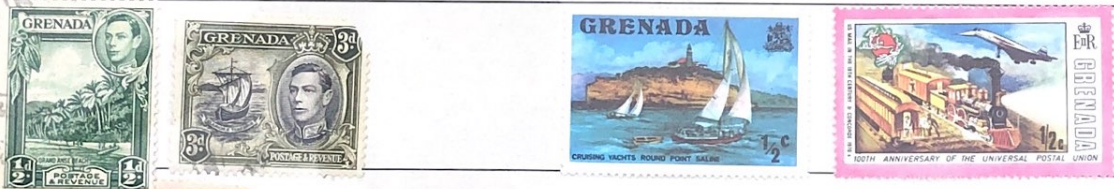
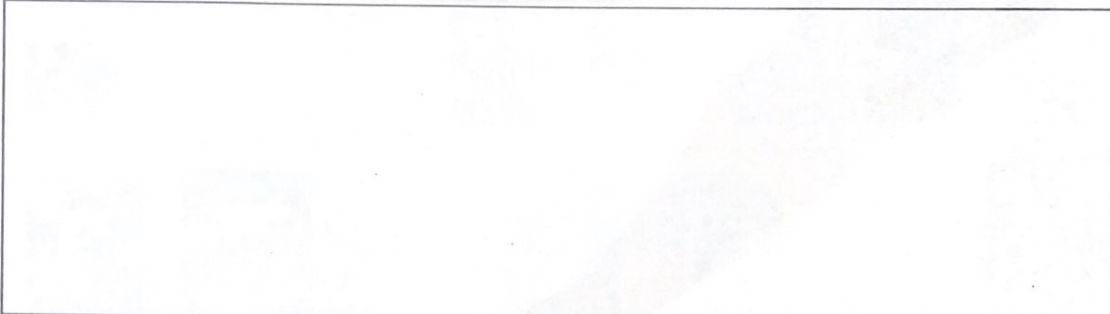
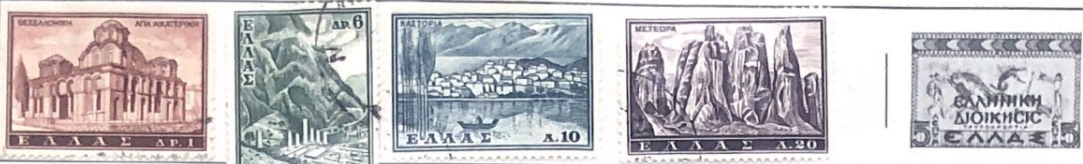
© H. E. HARRIS & CO. PRINTED IN U. S. A.

GREECE



© H. E. HARRIS & CO. PRINTED IN U. S. A.

GREECE · GREENLAND · GRENADA · GUADELOUPE



© H. E. HARRIS & CO. PRINTED IN U. S. A.

GUATEMALA



Beloved by tourists is GUATEMALA (42,042 sq. mi.; pop. 3,500,000; cap. Guatemala City), most populous of Central American countries. Here the Spanish discovered and conquered, in 1524, a great civilization of Mayan Indians, whose monuments are shown on many stamps. Today 60% of the people are still Indians, famed for their handicrafts; 35% are mestizo; 5% white—the latter supplying most of the ruling class. Agriculture (subsistence farming, coffee and bananas) employs most of the people. Guatemala's national emblem is the quetzal, which dies in captivity, symbolizing liberty. Quetzal or no, the Guatemalans have lived much of their national life under dictators — Barrios, Cabrera, Ubico, etc. — whose portraits you will see on many of their postage stamps.

COAT OF ARMS

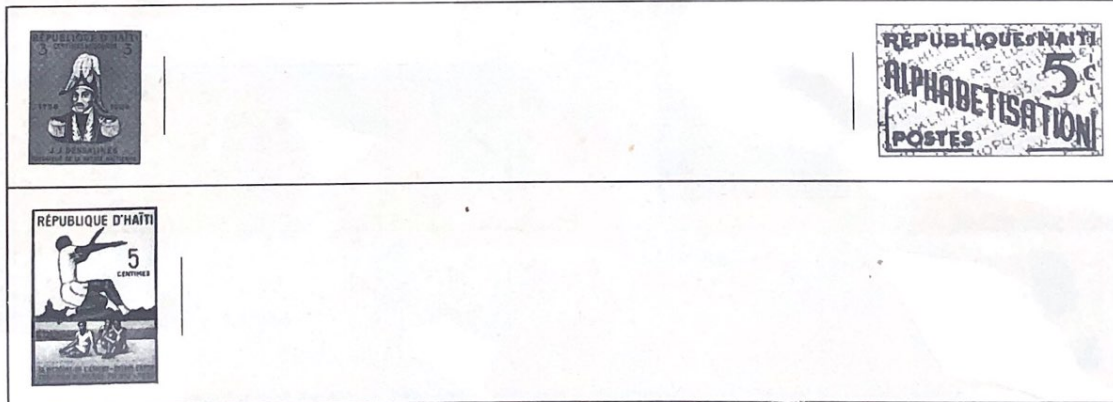


HAITI



Smallest, most densely populated of American republics, HAITI (10,714 sq. mi.; pop. 3,500,000; cap. Port-au-Prince, a popular stop for Caribbean cruise ships) is inhabited by French-speaking negroes and mulattoes. The latter, a mere 5% of the people, often educated in France, dominate social and political life. The blacks, poor and illiterate, live in dire poverty produced by their own population explosion; and back in the hills still worship African nature gods and practise the strange terrifying rites of voodoo. Except for a few local manufactures almost everyone engages in farming. Stamps portray heroes of the struggles for independence (achieved in 1804); and portraits of modern presidents, whose attempts to remain forever in office plunge Haiti into recurring periods of political violence.

COAT OF ARMS



GUATEMALA



HAITI

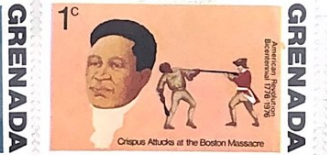


Speed-rite
TRADE MARK
PATENTED IN U.S.A.

HONDURAS



Speedy Mail



Speed-Rite
TRADE MARK
PRINTED IN U.S.A.



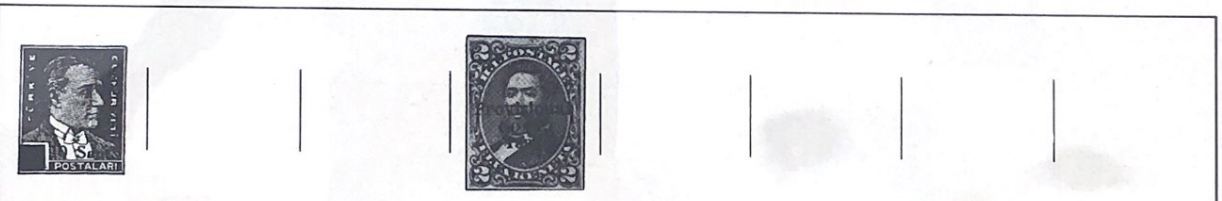
HONDURAS

HONDURAS (43,277 sq. mi.; pop. 1,900,000; cap. Tegucigalpa) has been nick-named "Banana-Land", because it grows such vast quantities of bananas — some 14 million stems a year! — on plantations owned by American fruit companies. It also exports coffee, mahogany, coconuts, silver and sarsaparilla. Typically Central American, Honduras has hot rainy coastal lowlands (where the bananas live), and a healthy mountainous interior with fertile plateaus and river valleys. The Honduran population is 86% mestizo, 10% Indian, 2% negro and 2% white. Honduras ("depths") was named by Columbus in 1502 from the deep water offshore. With its rugged interior and few roads or railroads, Honduras makes notable use of air transport, and has 63 airfields.

COAT OF ARMS



HATAY • HAWAII • HEJAZ • HONG KONG



PRINTED IN U.S.A. HARRIS & CO.

HUNGARY



HUNGARY (35,919 sq. mi.; pop. 9,900,000; cap. Budapest) means "Land of the Huns"—those fierce invaders of the 5th century—but the Hungarians call their country **MAGYARORSZAG**, "Land of the Magyars," from the name of their race. The Magyars were converted to Christianity about 1,000 A.D. by King-Saint Stephen, whose royal crown became their national emblem. Devoutly Catholic, Hungary for many years decorated its stamps with saints, madonnas, cathedrals and religious scenes. Forced by Russia to become a Communist Republic (1947) the stamps thereafter portrayed revolutionists, workers, peasants, industrial progress, Soviet friendship, etc.! The Hungarians revolted in 1956 against their detested "People's Republic," but were ruthlessly crushed by an invasion of 200,000 Russian soldiers.

COAT OF ARMS

